



Fábio Menezes de Carvalho

Chefe da Floresta Nacional do Tapajós – ICMBio

Coordenador Regional Substituto – CR3



Ministério do
Meio Ambiente



An aerial photograph of a dense tropical forest, showing a variety of green trees and foliage. The image is framed by a dark green oval border. In the top right and bottom left corners, there are decorative clusters of green and yellow circles of varying sizes. The text "FLORESTA NACIONAL DO TAPAJÓS" is written in a bold, yellow, italicized sans-serif font, centered within the oval.

FLORESTA NACIONAL DO TAPAJÓS

FLORESTA NACIONAL DO TAPAJÓS

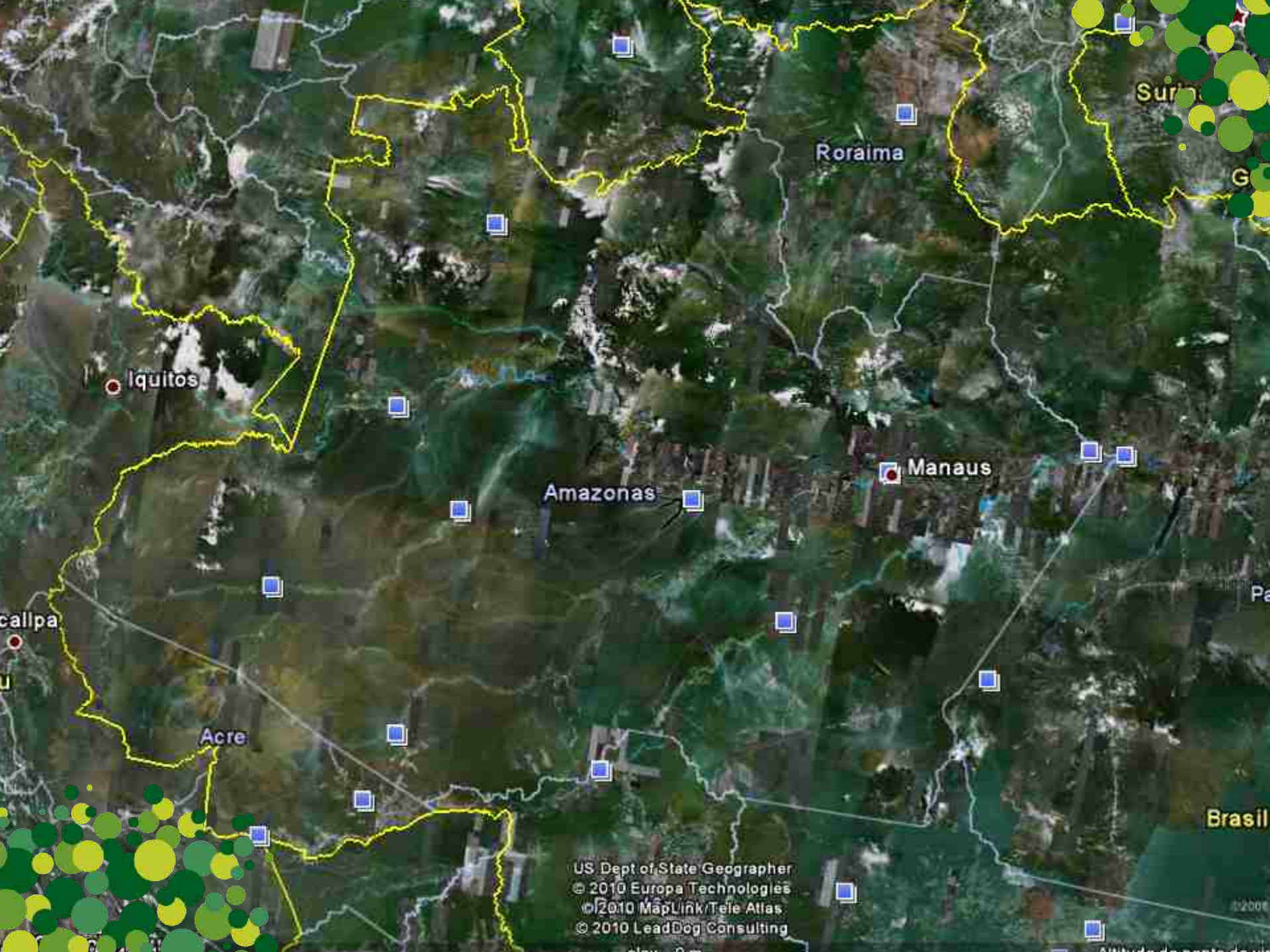
- Criada em 1974;

FLORESTA NACIONAL DO TAPAJÓS

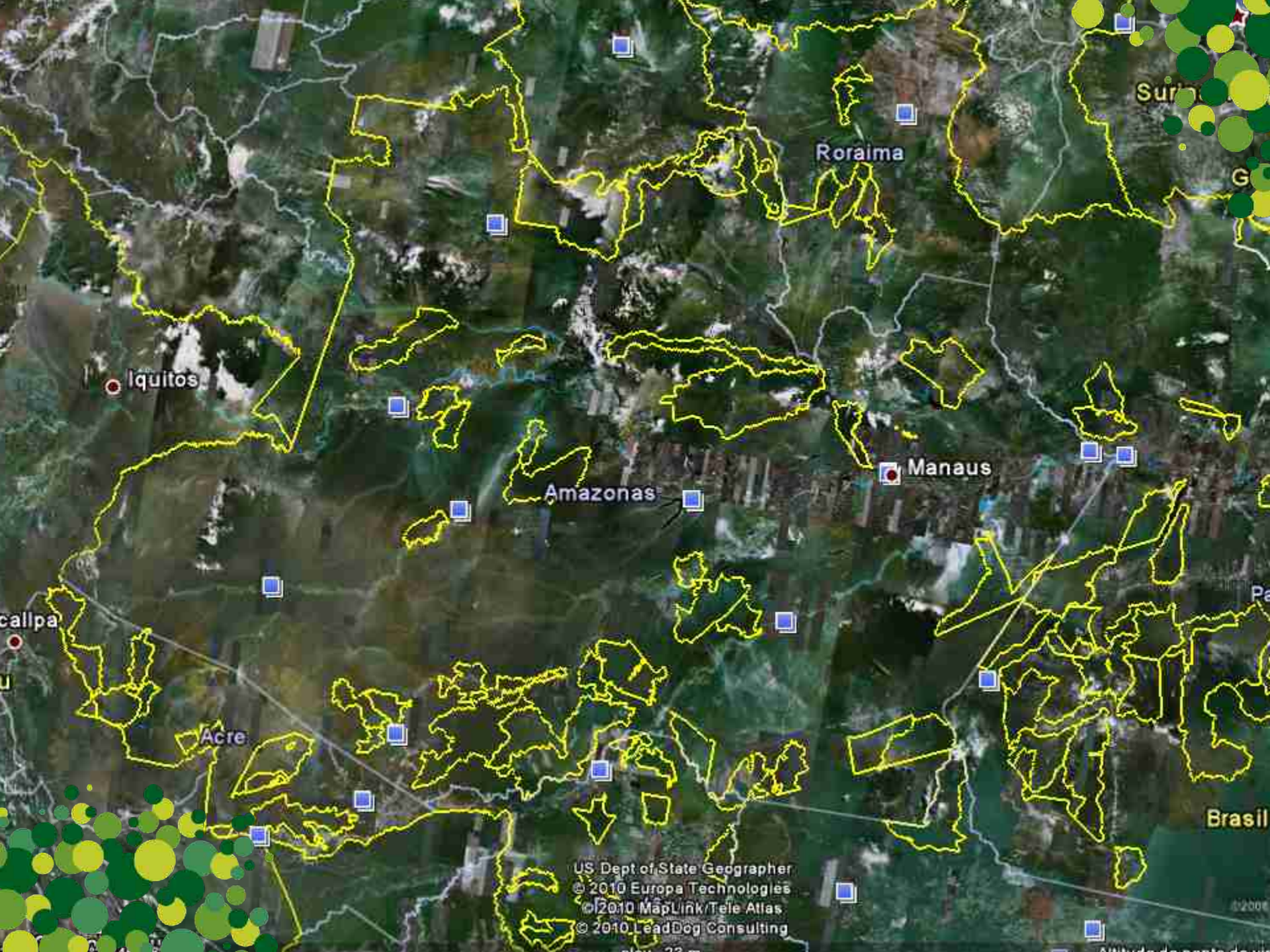
- Criada em 1974;
- Localizada na Amazônia – 527.310 ha;



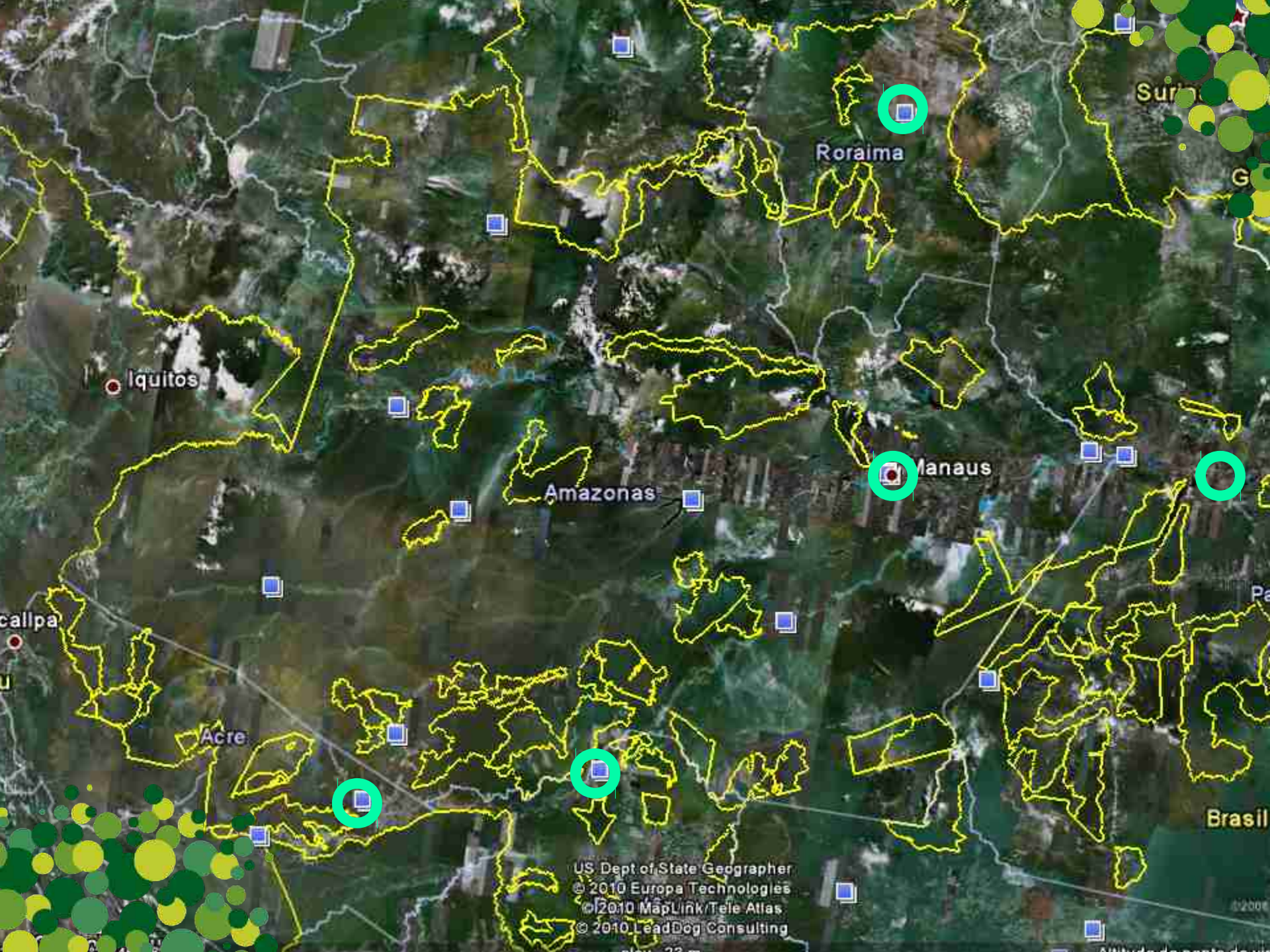
© 2011 MapLink/Tele Atlas
© 2011 Europa Technologies
US Dept of State Geographer
© 2011 Google



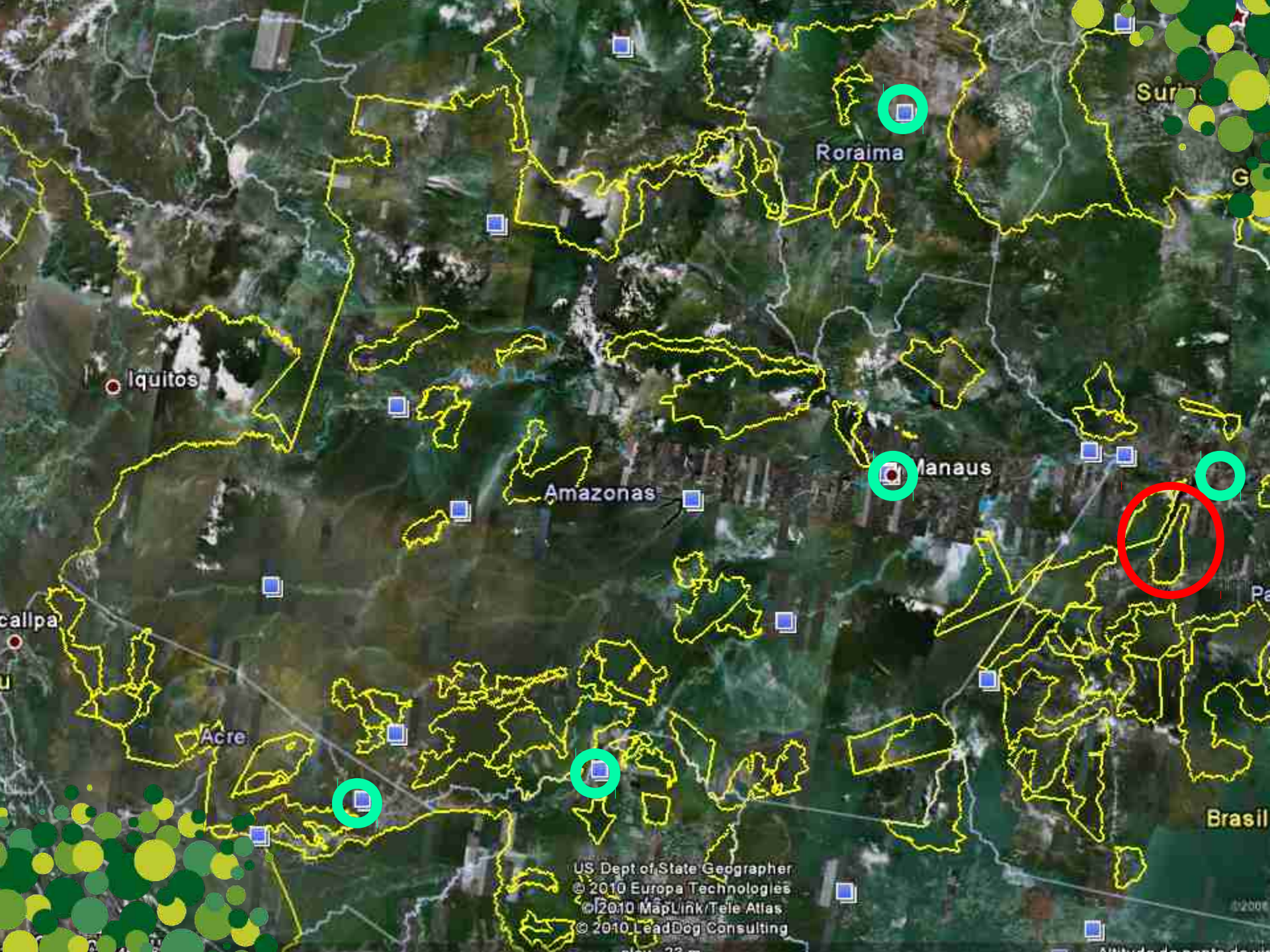
US Dept of State Geographer
© 2010 Europa Technologies
© 2010 MapLink/Tele Atlas
© 2010 LeadDog Consulting



US Dept of State Geographer
© 2010 Europa Technologies
© 2010 MapLink/Tele Atlas
© 2010 LeadDog Consulting



US Dept of State Geographer
© 2010 Europa Technologies
© 2010 MapLink/Tele Atlas
© 2010 LeadDog Consulting



Suriname

Roraima

Iquitos

Amazonas

Manaus

Calapa

Acre

Brasil

US Dept of State Geographer
© 2010 Europa Technologies
© 2010 MapLink/Tele Atlas
© 2010 LeadDog Consulting

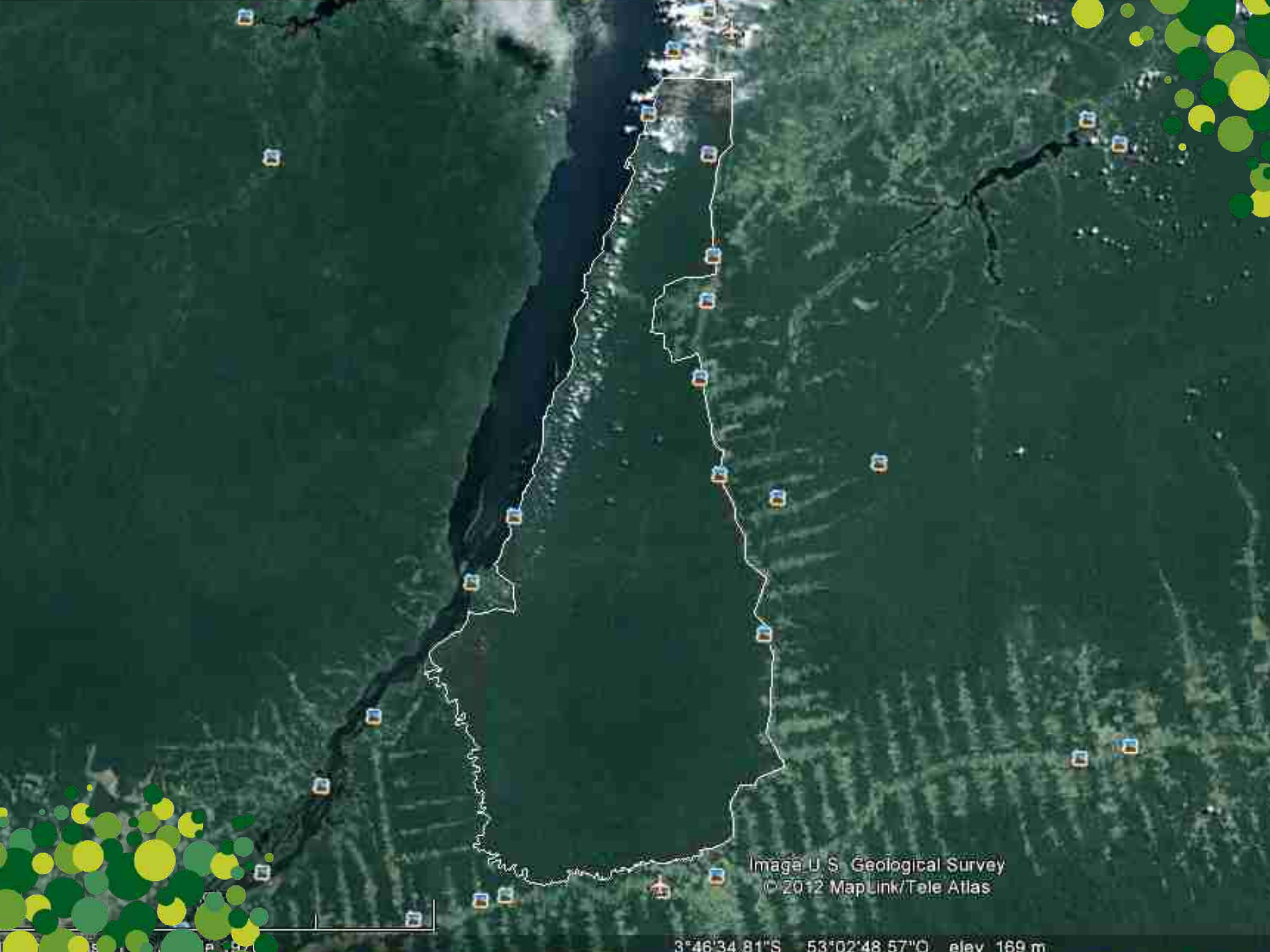
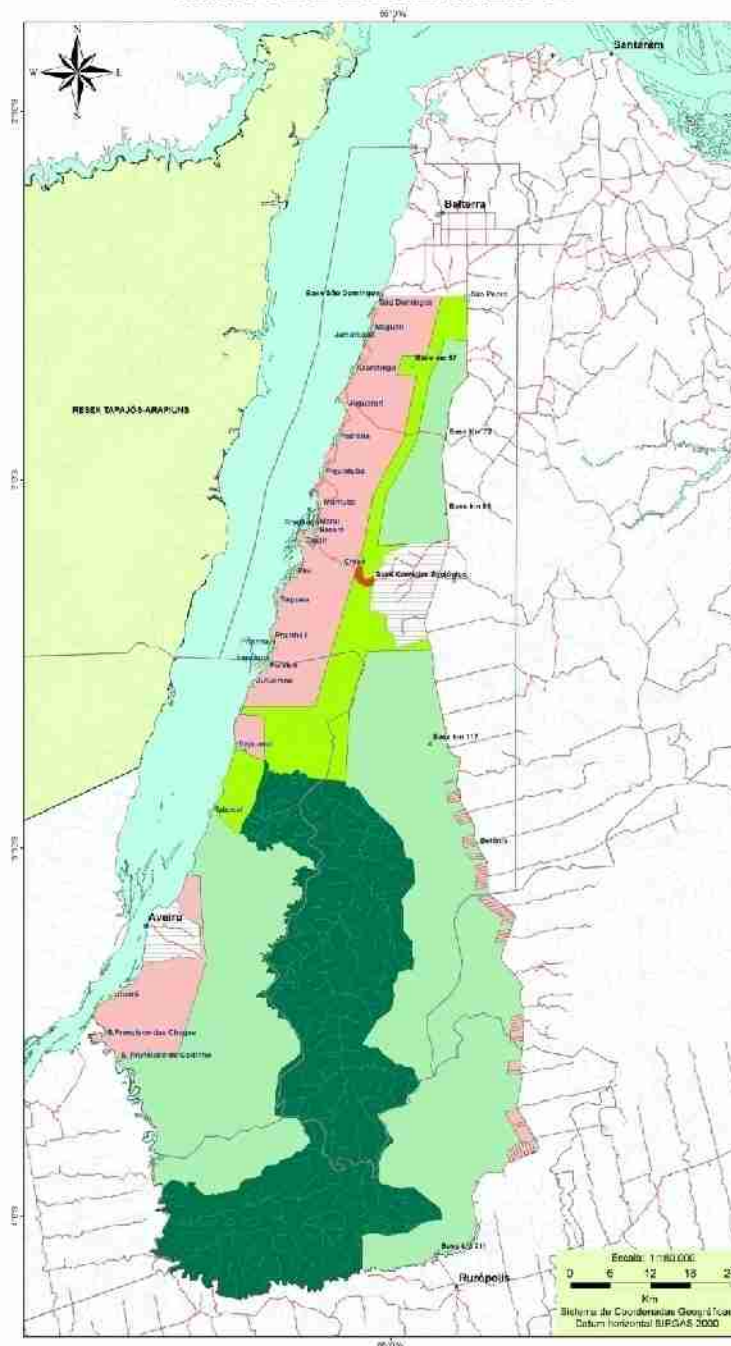


Image U.S. Geological Survey
© 2012 MapLink/Tele Atlas

3°46'34.81"S 53°02'48.57"W elev 169 m

FLORESTA NACIONAL DO TAPAJÓS

MAPA DE ZONEAMENTO



CONVENÇÕES

- RIO
- CURSO D'ÁGUA
- ESTRADAS E RAMAIS
- AEROPORTO

SEDES E LIMITES

- SEDES MUNICIPAIS
- BASES ICMBio
- COMUNIDADES DA FLONA DO TAPAJÓS
- LIMITES MUNICIPAIS
- RESEX TAPAJÓS-ARAPIUNS

ZONEAMENTO DA FLONA DO TAPAJÓS


- Corredor Biológico (42.110,113 ha)
- Manejo Florestal Ecológico Comunitário (238.060,043 ha)
- População (68.759,121 ha)
- Preservação (152.070,475 ha)
- Recuperação (470,257 ha)
- Zona de Amortecimento (17.001,629 ha)

Mapa elaborado para a Revisão do Plano de Manejo da Floresta Nacional do Tapajós.
Responsável Técnico: Darlene Andrade
Rorotapajós.pa@icmbio.gov.br

Garantem - PA
junho/2013

FLORESTA NACIONAL DO TAPAJÓS



- 1. GESTÃO SOCIOAMBIENTAL;**
 - 2. USO SUSTENTÁVEL;**
 - 3. PESQUISA CIENTÍFICA;**
 - 4. PROTEÇÃO AMBIENTAL;**
 - 5. USO PÚBLICO.**
- 



2. Gestão socioambiental

FLORESTA NACIONAL DO TAPAJÓS


1. GESTÃO SOCIOAMBIENTAL;



FLORESTA NACIONAL DO TAPAJÓS



1. GESTÃO SOCIOAMBIENTAL;

- **Bolsa Verde;**
 - **Luz pra Todos;**
 - **Crédito habitação;**
 - **Gestão de Conflitos – 6000 moradores.**
- 

GESTÃO DE CONFLITOS



FLORESTA NACIONAL DO TAPAJÓS



- 1. GESTÃO SOCIOAMBIENTAL;**
- 2. USO SUSTENTÁVEL;**





2. USO SUSTENTÁVEL

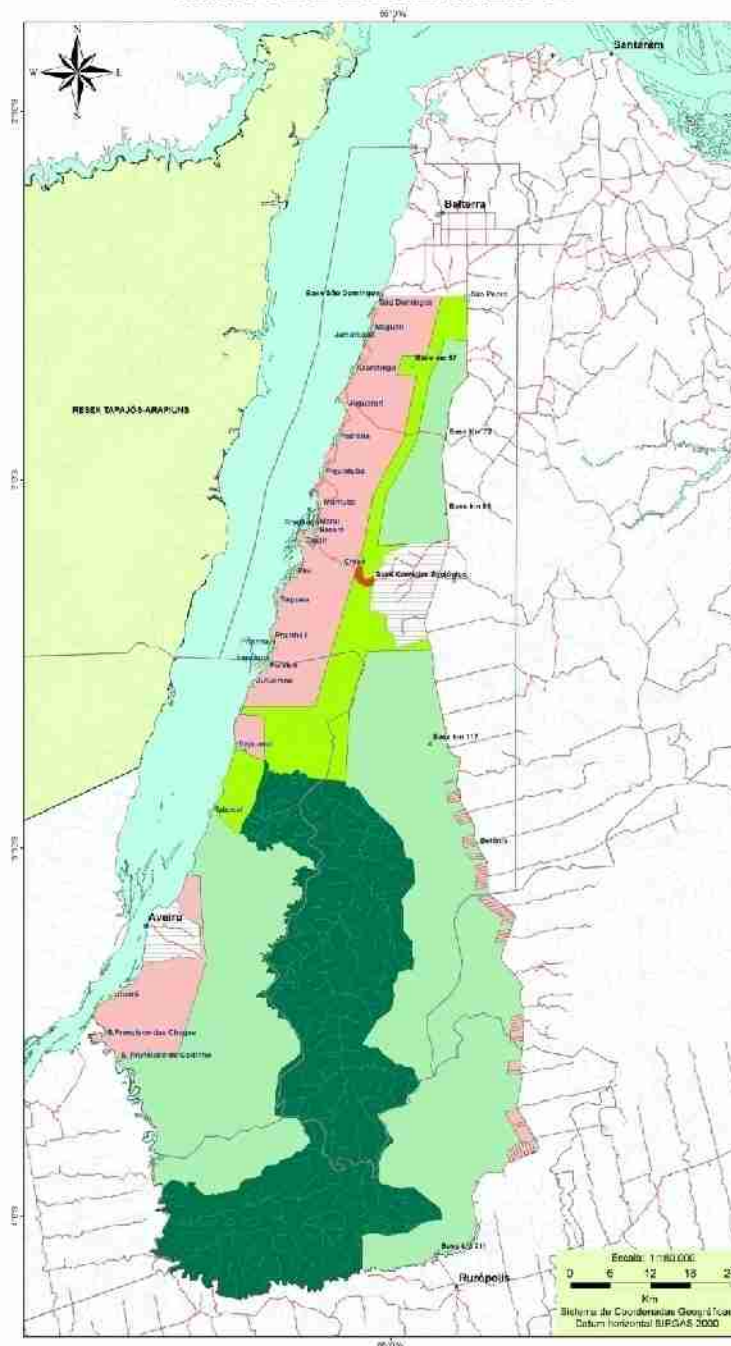
2. USO SUSTENTÁVEL

Lei Federal nº 9985 – SNUC – Art. 17

- Tem como objetivo básico o uso múltiplo sustentável dos recursos florestais, e a pesquisa científica;

FLORESTA NACIONAL DO TAPAJÓS

MAPA DE ZONEAMENTO



CONVENÇÕES

- RIO
- CURSO D'ÁGUA
- ESTRADAS E RAMAIS
- AEROPORTO

SEDES E LIMITES

- SEDES MUNICIPAIS
- BASES ICMBio
- COMUNIDADES DA FLONA DO TAPAJÓS
- LIMITES MUNICIPAIS
- RESEX TAPAJÓS-ARAPIUNS

ZONEAMENTO DA FLONA DO TAPAJÓS

- Corredor Biológico (42.110,113 ha)
- Manejo Florestal (238.060,043 ha)
- Reserva (152.070,475 ha)
- Recuperação (470,257 ha)
- Zona de Amortecimento (17.001,529 ha)

Mapa elaborado para a Revisão do Plano de Manejo da Floresta Nacional do Tapajós. Responsável Técnico: Dairien Andrade. flonatajops@icmbio.gov.br

Santarém - PA
Junho/2013

















coleção
bielásticas

Artesato em lã ecológica, contendo e
inspirado na natureza. Mantendo sua peça
húmida hidratando-a com o óleo contido no
frasco. Limpe somente com pano seco. Algumas
peças podem apresentar aberturas a lã.

www.julianabertolini.com



juliana bertolini
www.julianabertolini.com





© LEONARDO MILANO



























Certified Wood



2. USO SUSTENTÁVEL

**“ Em 2013, a COOMFLONA manejou
0,2% da unidade, e gerou
R\$ 6.000.000,00”**


2. USO SUSTENTÁVEL



**Cooperativa Mista da Flona do Tapajós
(COOMFLONA)**

FLORESTA NACIONAL DO TAPAJÓS



- 1. GESTÃO SOCIOAMBIENTAL;**
 - 2. USO SUSTENTÁVEL;**
 - 3. PESQUISA CIENTÍFICA;**
- 

3 – PESQUISA CIENTIFICA



Golfinho Rotador

- Quem Somos
- O Que Fazemos
- Guia do Visitante
- Destaques
- Legislação
- Galeria de Imagens
- Planos de Ação Nacionais

Peixe-Boi Netuno



ILHA DE ITAMARACÁ - PE

QUINTA-FEIRA



30 °C

21 °C

SEXTA-FEIRA



30 °C

22 °C

SÁBADO



30 °C

21 °C

DOMINGO

COMO
CHEGAR





Harpy Eagle - Preservation Program

**INPA**INSTITUTO NACIONAL DE
PESQUISAS DA AMAZÔNIA

Principal

O Programa

Espécies estudadas

Atividades

Fale conosco

Mais

Parcerias

O Programa de Conservação do Gavião-real (PCGR) do Instituto Nacional de Pesquisas da Amazônia (INPA) iniciou suas **atividades de pesquisa** em 1997 após a descoberta do primeiro ninho de gavião-real *Harpia harpyja* numa floresta de terra-firme, região próxima a Manaus.



Em 1999, estabeleceram-se metas para ampliar a localização, o mapeamento e o monitoramento de ninhos para estudar a biologia da espécie na Amazônia Brasileira com a participação de voluntários dispostos a enfrentar o desafio de conservar esta espécie. Hoje o projeto conta com o apoio de pesquisadores parceiros, voluntários, estudantes e bolsistas na coleta de dados, atividades de **educação ambiental** e divulgação de

do entorno de ninhos. Monitoramos 60 ninhos de s estados do Amazonas, Pará, Rondônia e outros cinco



Vigésima harpia

28/03/2012

Vinte

harpias

estão

saindo

Anterior

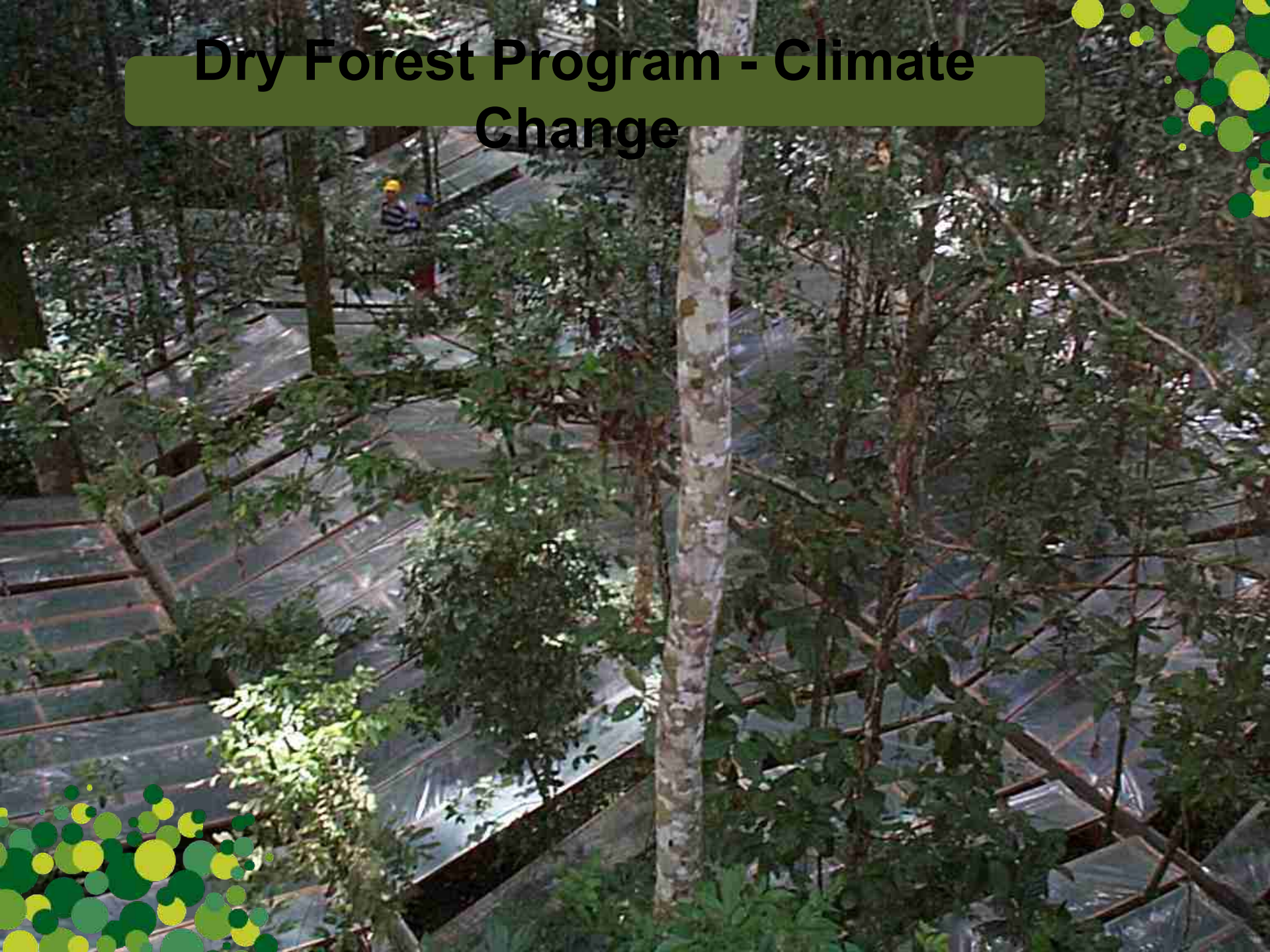
2 de 13

Próximo

Se você avistou ou fotografou um gavião-real na natureza e quer contribuir com a nossa pesquisa, gostaríamos de mapear mais este registro. Preencha o formulário e podemos contactar você !

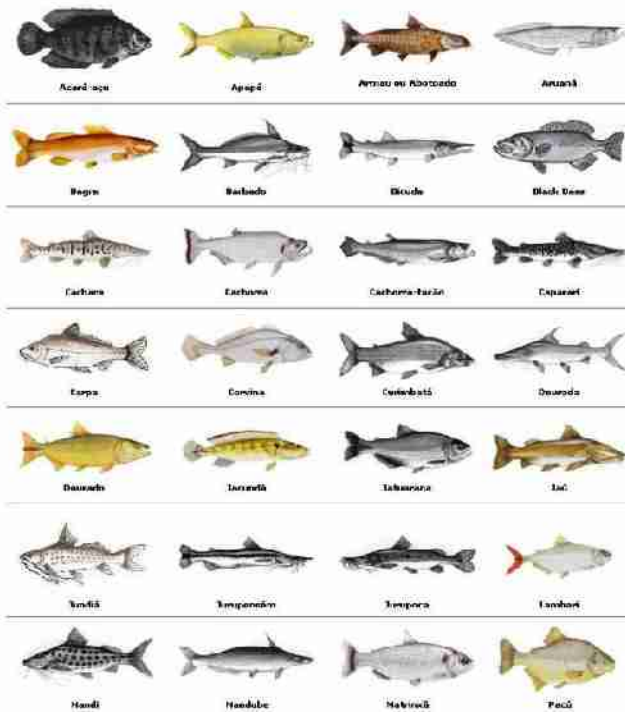


Dry Forest Program - Climate Change



Parapará Jacaranda copaia







Programa de
Grande Escala da
Biosfera-Almosfera
na Amazônia

Manaus, 23 de abril de 2014

English

Pesquisar no Beija-Flor ?

Buscar

[O Programa](#)[A Pesquisa](#)[Treinamento
e Educação](#)[Políticas e
Procedimentos](#)[LBA - DIS](#)[Publicações](#)[LBA Informa](#)[Oportunidades](#)[Eventos](#)**Banco de Imagens LBA**

Painéis solares - Torre K34 -
BR-174

**Destaques**

Cientistas brasileiros e britânicos criam parceria para estudar degradação de florestas Fonte: Agência Brasil

Amazônia: Cientistas LBA elucidam como desmatamento altera chuvas Fonte: site OECO

LBA publica artigo de Review na revista Nature e outro artigo que destaca sua concepção e realização

**Informativo LBA****Eventos**

**Curso on-line
Floresta Amazônica e as Mudanças Climáticas**



Em Teve Real



Apre...



Meu...



Face...



LBA ...




Mic...



PT

FLORESTA NACIONAL DO TAPAJÓS



- 1. GESTÃO SOCIOAMBIENTAL;**
 - 2. USO SUSTENTÁVEL;**
 - 3. PESQUISA CIENTÍFICA;**
 - 4. PROTEÇÃO AMBIENTAL;**
- 

4 - PROTEÇÃO





4. PROTEÇÃO

- **Desmatamento Zero - PRODES;**

Fechamento de Garimpo Ilegal



Timber Theft



Timber Theft



4. PROTEÇÃO

- **Desmatamento Zero - PRODES;**
- **Redução gado de corte 95% - 10.000;**



4. PROTEÇÃO

- **Desmatamento Zero - PRODES;**
- **Redução gado de corte 95% - 10.000;**
- **Recomposição de mais de 1000ha;**

Illegal Hunting







FISCALIZAÇÃO
ICMBio
MMA

FLORESTA NACIONAL DO TAPAJÓS



1. GESTÃO SOCIOAMBIENTAL;
 2. USO SUSTENTÁVEL;
 3. PESQUISA CIENTÍFICA;
 4. PROTEÇÃO AMBIENTAL;
 5. USO PÚBLICO.
- 
- 

5. USO PUBLICO











FLORESTA NACIONAL DO TAPAJÓS
ICMBio

PARE
IDENTIFIQUE-SE

Floresta Nacional do Tapajós
ÁREA DE FLORESTA COM RITMO AUTOMÁTICO E CAM-
PUS DE FLORESTA NA FLORESTA AUTOMÁTICA
CASA NA FLORESTA
CAMPUS COMERCIAL: FLORESTA DO TAPAJÓS - 01/04/13
CAMPUS: 01/04/13 - 01/04/13







FLORESTA NACIONAL DO TAPAJÓS
ICMBio
BASE DE TERRA RICA



FLORESTA NACIONAL DO TAPAJÓS
ICMBio
BASE DE TERRA RICA

FLORESTA NACIONAL DO TAPAJÓS

ICMBio



FLORESTA NACIONAL DO TAPAJÓS

ICMBio



5. USO PÚBLICO

- **Aproximadamente 30.000 usuários em 2013;**



[About JM](#) [Runner Forum](#) [Gallery](#) [JM Shop](#) [Find a Race](#)

[★ Brazil Race](#) [Volunteers](#) [Sponsors](#) [Media](#) [Eco](#) [Race '12](#) [Vietnam](#)

[Race News](#) [Emails](#) [Photos](#) [Results](#) [Video Clips](#)







5. USO PÚBLICO

- **Aproximadamente 30.000 usuários em 2013;**

USFS – FLONA DO TAPAJÓS



USFS – FLONA DO TAPAJÓS



1. CONHECIMENTO:

USFS – FLONA DO TAPAJÓS



1. CONHECIMENTO:

Treinamentos equipe



USFS – FLONA DO TAPAJÓS



- 1. CONHECIMENTO:**
Treinamentos equipe
Aprender fazendo





USFS – FLONA DO TAPAJÓS



1. CONHECIMENTO:

Treinamentos equipe

Aprender fazendo

Fórum – Interpretação





USFS – FLONA DO TAPAJÓS



1. CONHECIMENTO:

Treinamentos equipe

Aprender fazendo

Fórum – Interpretação

USFS – FLONA DO TAPAJÓS



1. CONHECIMENTO:

Treinamentos equipe

Aprender fazendo

Fórum – Interpretação

2. EXECUÇÃO:

USFS – FLONA DO TAPAJÓS



1. CONHECIMENTO:

Treinamentos equipe

Aprender fazendo

Fórum – Interpretação

2. EXECUÇÃO:

Planejamento

INFRASTRUCTURE

Terra Rica

1/2. \$5000 for 1/2 match of
USO build on site in AdC
to launch presence.
Coord.

(Belongs
to IMPA)

Produced
1 LA Site Plan
3 Prepared

WVU
May 3-10

- Trail
- Parking
- Overlook/Vista
- Shelter
- Toilet
- Cooking Area Simple
- Birding Trail/Blind

- Administrative
Site for Monitors

6 Community
Hammock
Center
- Floor
Plan
WVU??

4

Detri

Get the

Development Level

water functioning

@ 2,000 for pump plus

2.2 Dry Site

Dry Toilet

compost
vault
clerico

It does has a
well

Need a pump.
@ \$2000 on

5

Remove Existing Structures

3

Sao Domingo Site Plan

- Toilet
- Contact Center - shop
- Boat Dock
- River Access / Stairs
- Signage
- ~~well~~

1

JCH Bio - Determine Existing
New Well

Fix Well

Well
@ 2,000-3,000

WVU
takes into
account
existing

Exact Dimensions
of pad

Existing?
Plotting

Infrastructure

Toilet Trial/Teaser

LA Design for Terra Rica Site

Inventory Infrastructure Forest Wide

Remove Structures at Terra Rica

One well

Training/Materials

Trail Skills Training

Live Project

Applied Trail Skills On the Job

Materials/Supplies

Road & Trail Counters

Trail Tool Mtn Cache in 2 communities

First Aid Caches @

Analog Radios

Test Set & Pilot

Test Set & Pilot

Trails/Access

Rubber Tree Trail Devel.

Review Existing Trails

Improve Existing Trails

Inform Fabio @ Brasilia Re Trails - Involve Trail Wkshp Plan

Inform Fabio @ Brasilia Re Trails - Involve Trail Wkshp Plan

Inform Fabio @ Brasilia Re Trails - Involve Trail Wkshp Plan

Inform Fabio @ Brasilia Re Trails - Involve Trail Wkshp Plan

Inform Fabio @ Brasilia Re Trails - Involve Trail Wkshp Plan

Inform Fabio @ Brasilia Re Trails - Involve Trail Wkshp Plan

Inform Fabio @ Brasilia Re Trails - Involve Trail Wkshp Plan

Inform Fabio @ Brasilia Re Trails - Involve Trail Wkshp Plan

Inform Fabio @ Brasilia Re Trails - Involve Trail Wkshp Plan

Inform Fabio @ Brasilia Re Trails - Involve Trail Wkshp Plan

Inform Fabio @ Brasilia Re Trails - Involve Trail Wkshp Plan

Inform Fabio @ Brasilia Re Trails - Involve Trail Wkshp Plan

Inform Fabio @ Brasilia Re Trails - Involve Trail Wkshp Plan

Inform Fabio @ Brasilia Re Trails - Involve Trail Wkshp Plan

Inform Fabio @ Brasilia Re Trails - Involve Trail Wkshp Plan

Inform Fabio @ Brasilia Re Trails - Involve Trail Wkshp Plan

Inform Fabio @ Brasilia Re Trails - Involve Trail Wkshp Plan

Inform Fabio @ Brasilia Re Trails - Involve Trail Wkshp Plan

Inform Fabio @ Brasilia Re Trails - Involve Trail Wkshp Plan

Inform Fabio @ Brasilia Re Trails - Involve Trail Wkshp Plan

Inform Fabio @ Brasilia Re Trails - Involve Trail Wkshp Plan

Inform Fabio @ Brasilia Re Trails - Involve Trail Wkshp Plan

Inform Fabio @ Brasilia Re Trails - Involve Trail Wkshp Plan

Inform Fabio @ Brasilia Re Trails - Involve Trail Wkshp Plan

Info/Interp

Orientation Maps for All

Community Orientation Signs

Trailhead Signing

Interpretive Plan

Inventory of Exst. Special

LCOM Info @ A d C

Mgt./Other

Explore Brasilia's Forests

LCOM Travel Agency Consult - Phase 1

Agreement w/ F3, ICH Bio, COMFLO

Visitor Use Monitoring by B3

Translate to Eng and

UXF Analyze 2 existing training manuals

Com Plan for Demo Project

Com Plan for Demo Project

Com Plan for Demo Project

Com Plan for Demo Project

INFRASTRUCTURE

Terra Rica

1/2 \$5000 for 1/2 match up build on rehab site in A d C to launch presence. Cont.

LA Site Plan

Prepared

- Trail
- Parking
- Overlook/Vista
- Shelter
- Toilet
- Cooking Area Simple
- Birding Trail/Blind

- Administrative Site for Monitors

WV U May 3-10

6 COMMUNITY MONITORING CENTER - Floor Plan WVU

4

Get the water functioning

Development Level

2,000 for pump plus

2.2 Dry Site

Dry Toilet

2,000 for pump plus

2.2 Dry Site

Dry Toilet

2,000 for pump plus

2.2 Dry Site

Dry Toilet

2,000 for pump plus

2.2 Dry Site

Dry Toilet

2,000 for pump plus

2.2 Dry Site

Dry Toilet

2,000 for pump plus

5

Remove Existing Structures

Remove Existing Structures

Remove Existing Structures

Remove Existing Structures

Remove Existing Structures

Remove Existing Structures

Remove Existing Structures

Remove Existing Structures

Remove Existing Structures

Remove Existing Structures

Remove Existing Structures

Remove Existing Structures

Remove Existing Structures

Remove Existing Structures

Remove Existing Structures

Remove Existing Structures

Remove Existing Structures

Remove Existing Structures

Remove Existing Structures

Remove Existing Structures

Remove Existing Structures

Remove Existing Structures

Remove Existing Structures

Remove Existing Structures

Remove Existing Structures

Remove Existing Structures

Remove Existing Structures

Remove Existing Structures

Remove Existing Structures

Remove Existing Structures

Remove Existing Structures

Remove Existing Structures

Remove Existing Structures

Remove Existing Structures

Remove Existing Structures

Remove Existing Structures

Remove Existing Structures

Remove Existing Structures

Remove Existing Structures

Remove Existing Structures

Remove Existing Structures

Remove Existing Structures

Remove Existing Structures

Remove Existing Structures

Remove Existing Structures

Remove Existing Structures

Remove Existing Structures

Remove Existing Structures

Remove Existing Structures

Remove Existing Structures

Remove Existing Structures

Remove Existing Structures

Remove Existing Structures

Remove Existing Structures

Remove Existing Structures

Remove Existing Structures

Remove Existing Structures

Remove Existing Structures

Remove Existing Structures

Remove Existing Structures

Remove Existing Structures

Remove Existing Structures

Remove Existing Structures

Remove Existing Structures

Remove Existing Structures

Remove Existing Structures

Remove Existing Structures

Remove Existing Structures

Remove Existing Structures

Remove Existing Structures

Remove Existing Structures

Remove Existing Structures

Remove Existing Structures

Remove Existing Structures

Remove Existing Structures

Remove Existing Structures

Remove Existing Structures

Remove Existing Structures

Remove Existing Structures

Remove Existing Structures

Remove Existing Structures

Remove Existing Structures

Remove Existing Structures

Remove Existing Structures

Remove Existing Structures

Remove Existing Structures

Remove Existing Structures

Remove Existing Structures

Remove Existing Structures

Remove Existing Structures

Remove Existing Structures

Remove Existing Structures

Remove Existing Structures

Remove Existing Structures

Remove Existing Structures

Remove Existing Structures

Remove Existing Structures

Remove Existing Structures

Remove Existing Structures

Remove Existing Structures

Remove Existing Structures

Remove Existing Structures

Remove Existing Structures

Remove Existing Structures

Remove Existing Structures

Remove Existing Structures

Remove Existing Structures

Remove Existing Structures

Remove Existing Structures

Remove Existing Structures

Remove Existing Structures

Remove Existing Structures

Remove Existing Structures

Remove Existing Structures

Remove Existing Structures

Remove Existing Structures

Remove Existing Structures

Remove Existing Structures

Remove Existing Structures

Remove Existing Structures

Remove Existing Structures

Remove Existing Structures

Remove Existing Structures

Remove Existing Structures

Remove Existing Structures

Remove Existing Structures

Remove Existing Structures

Remove Existing Structures

Remove Existing Structures

Remove Existing Structures

Remove Existing Structures

Remove Existing Structures

Remove Existing Structures

Remove Existing Structures

Remove Existing Structures

Remove Existing Structures

Remove Existing Structures

Remove Existing Structures

Remove Existing Structures

Remove Existing Structures

Remove Existing Structures

Remove Existing Structures

Remove Existing Structures

Remove Existing Structures

Remove Existing Structures

Remove Existing Structures

Remove Existing Structures

Remove Existing Structures

Remove Existing Structures

Remove Existing Structures

Remove Existing Structures

Remove Existing Structures

Remove Existing Structures

Remove Existing Structures

Remove Existing Structures

Remove Existing Structures

Remove Existing Structures

Remove Existing Structures

Remove Existing Structures

Remove Existing Structures

Remove Existing Structures

Remove Existing Structures

Remove Existing Structures

Remove Existing Structures

Remove Existing Structures

Remove Existing Structures

Remove Existing Structures

Remove Existing Structures

Remove Existing Structures

Remove Existing Structures

Remove Existing Structures

Remove Existing Structures

Remove Existing Structures

Remove Existing Structures

Remove Existing Structures

Remove Existing Structures

Remove Existing Structures

Remove Existing Structures

Remove Existing Structures

Remove Existing Structures

Remove Existing Structures

Remove Existing Structures

Remove Existing Structures

Remove Existing Structures

Remove Existing Structures

Remove Existing Structures

Remove Existing Structures

Remove Existing Structures

Remove Existing Structures

Remove Existing Structures

Remove Existing Structures

Remove Existing Structures

Remove Existing Structures

Remove Existing Structures

Remove Existing Structures

Remove Existing Structures

Remove Existing Structures

Remove Existing Structures

Remove Existing Structures

Remove Existing Structures

Remove Existing Structures

Remove Existing Structures

Remove Existing Structures

Remove Existing Structures



Document Before & After All Facts
Exchanges between Youth of Brazil
Info USFS / Universities

Sister Forests
English Training for Communities

- 3 Package Tours - Day Overnight
- Fishing - Rustic Lodge
- Customer Service Training

Explore a variety

- Tourism / EcoTourism Training
- Pilot Bilingual Signs/Info
- Community / Comfona Inters/Techs

- Inventory Boat Use to determine level
- Road / Trail Counters
- Potable Water

- Toilets - Strategically Located
- Improve Older Bases - Water Supply
- Orientation Maps Bases, Com, Stores
- Develop Oversight Bases

- Training for What is public Use - Broader Community / Cook
- Training for Non-Wood Product Craft Product Develop - Variety
- Training - Trail Skills College - complete
- Community Orientation Signs

- Trailhead Infrastructure / Parking
- Promote Hike / Storage @ TR
- Rubber Tree Trail Dev
- Rubber Tree Trail Picnic / Shelter

- Rubber Tree Site Overview
- Forest Agency Consultant
- Trail Agency Consultant
- Trail Entry

CEIVRA DIO

Walking Trails

- Welcome Center @ 3 Communities
- Main Road Info Site - etc

Boat Business Plan

- Boat Training
- Coop Bus Business Plan
- Bus Training

Bike Business Plan

- Kapah / Boat Business

Transportable Fruit Products

- Agreement between FS / Coop / ICH
- Matching Grants
- Improve Existing Trails

New Short trail @ Santa D.

- Tourism Logo / Niche / Branding

INTERPRETIVE PLAN

- Marketing Plan - Various Audiences

Review Existing Materials for use / Info

- Explore other digital technology
- Improve Websites - ICH, Coop, etc
- Road Routes

Implement Bike Between Comm

- Partnership between ICH, Coop, etc

Food + Water Services / Purchase

- Portable
- Cafe

Develop communication link on demonstration project

11 AM Radio

Review Proposed Trails

- Partner w/ existing Tourism Agencies to improve overall return to comm.
- Coop Youth Corp

Trail Mtrc. Trail Cache in each comm. Asso.

Inventory of current Infrastructure

Strategic Plan for next 10 yrs for Public Use: Sustain Income / Expend

- Invent current special events
- Consider New Special Events by Cultural

Look at connecting comm through assessing ops for LD Trails (but do not connect)

- Promote road bike riding
- Waste control mgmt/education in communities - Analyze opportunities for recycling garbage collection
- Information / Interp @ Service Station

Develop rotating cultural event schedule for comm Festival in the Forest

Community Outreach centers

- Coop products @ hotels

Spot Unit

Radio System

Trail Station

Trails of TNE

Birding Niche

- Guides
- Viewing Blind
- Support on going

COOP Tourism Center in A.C.

IMPA Bldg is strong option

Art / Music Efforts from Santarem

- Paint out
- Sing out

Build Green Infrastructure

Short Term Parameters

- Something tangible @ end of 3 years
- Needs to be measurable
- Finished Product or Photo by June
- Something affordable - Level A, B
- Skills staff available to do work
- Can be maintained over long run
- Start with trail to test location, use, technology, etc
- 1-2 trainings
- Teaser
- Work thru ICH / Coop
- Working Collaboration
- Before / After

USFS – FLONA DO TAPAJÓS



1. CONHECIMENTO:

Treinamentos equipe

Aprender fazendo

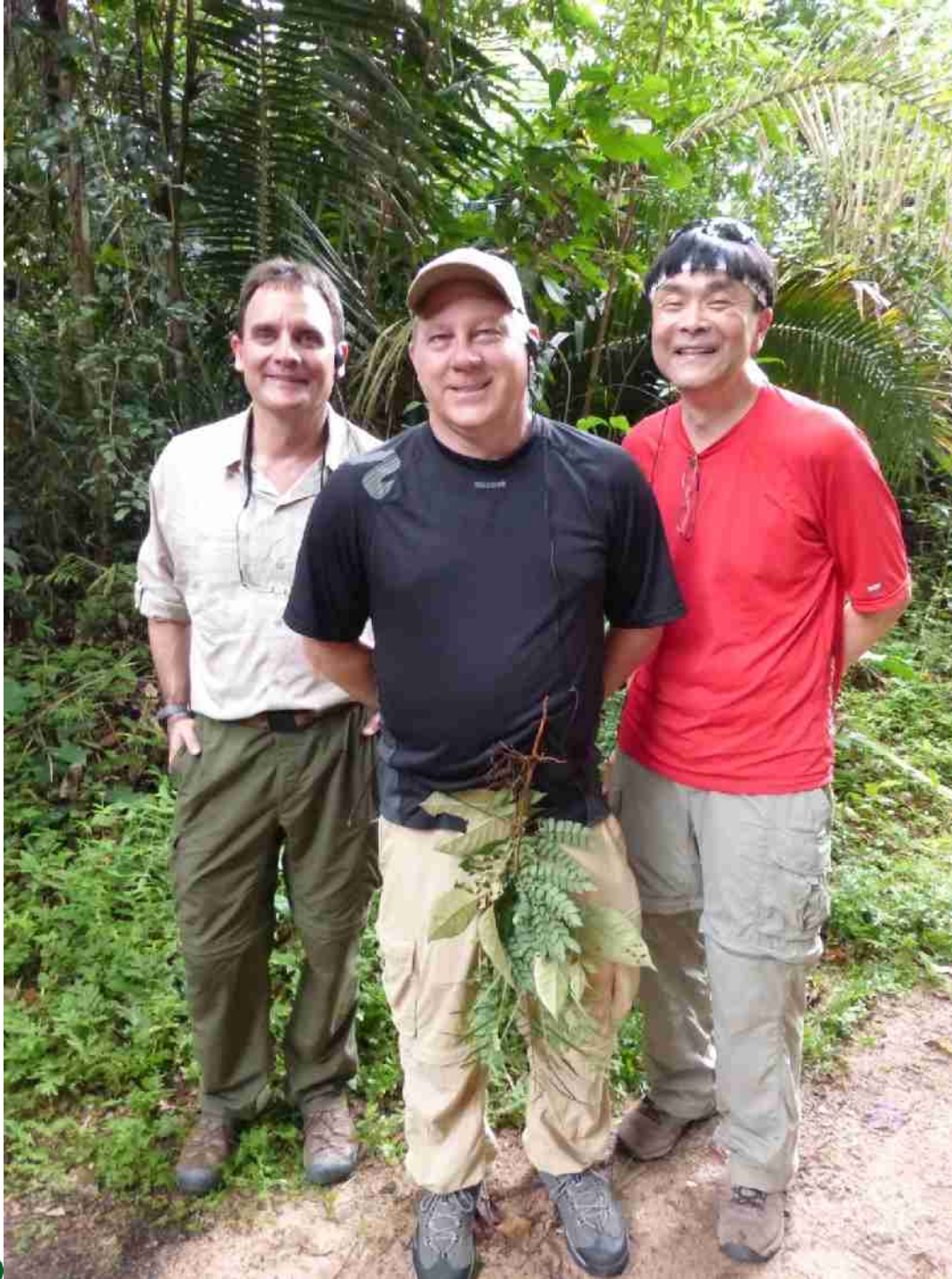
Fórum – Interpretação

2. EXECUÇÃO:

Planejamento

Aprender fazendo





USFS – FLONA DO TAPAJÓS



1. CONHECIMENTO:

Treinamentos equipe

Aprender fazendo

Fórum – Interpretação

2. EXECUÇÃO:

Planejamento

Aprender fazendo

Produtos



Mapa Trilha Itapuama



	Trilha do Piquet - Ladeira				
	Trilha das Cachoeiras - Ladeira				
	_____		_____		_____
	_____		_____		_____
	_____		_____		_____
	_____		_____		_____



5. USO PÚBLICO



A group of ten people, including men and women of various ages, are posing for a photo in a lush forest. They are standing in front of a large, vertical rock face that is heavily covered in green moss and lichen. The rock surface shows some faint, reddish-brown markings. The people are dressed in casual outdoor attire, mostly white t-shirts and shorts or pants. Some are standing, while others are crouching or sitting on the forest floor. The background is filled with dense green foliage and trees. The overall scene suggests a group outing or a field study in a natural environment.

**Thank You
Obrigado**



Fábio Menezes de Carvalho

Chefe da Floresta Nacional do Tapajós – ICMBio

Coordenador Regional Substituto – CR3



Ministério do
Meio Ambiente











